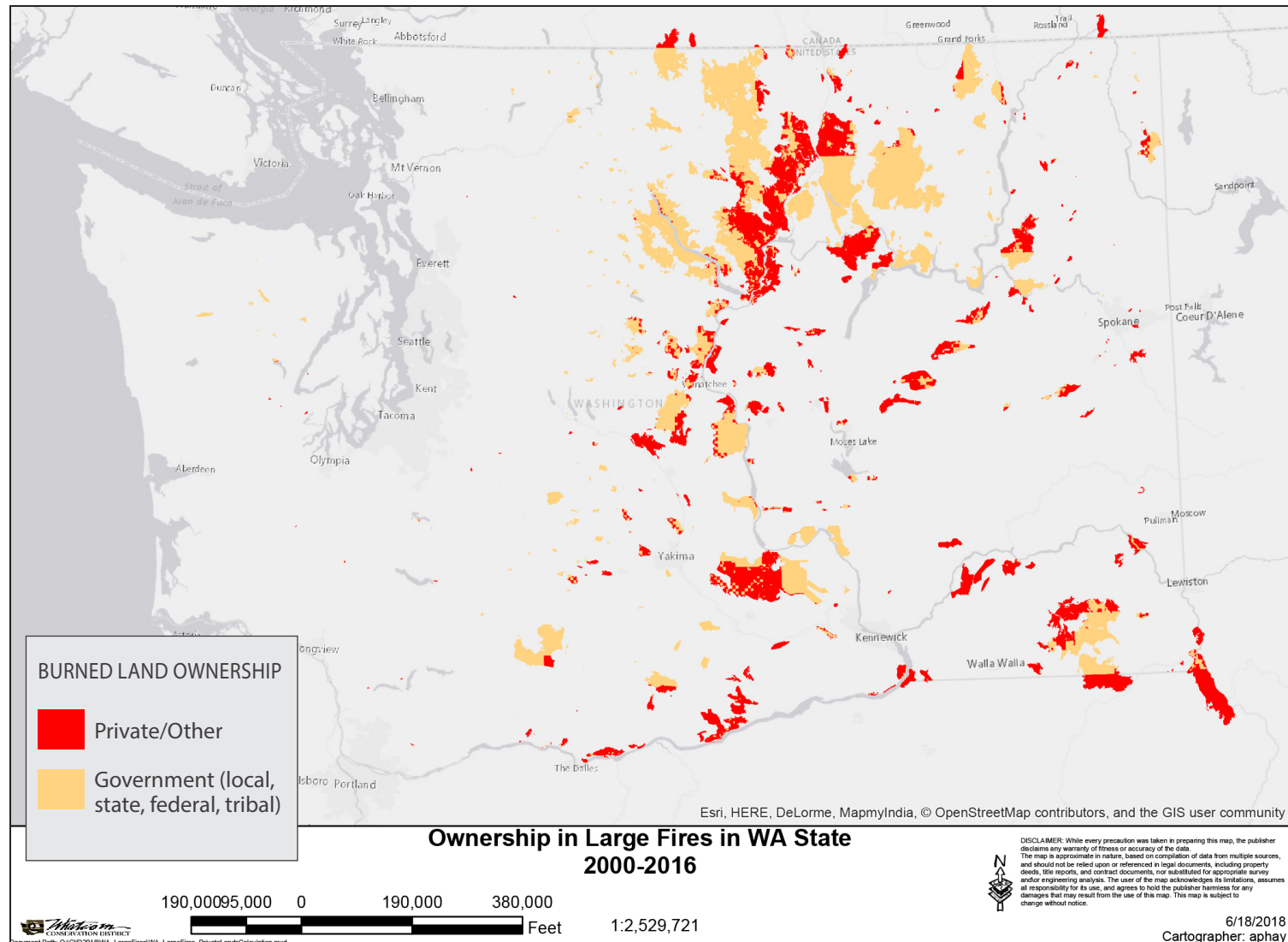


Private Lands Burned!

- ▶ Of the 3.8 million acres that burned in large fires in Washington between 2000-2016, over 1.5 million acres burned on private lands. Thousands more acres have burned on private lands since then.
- ▶ More and more homes are being built in forested areas. We must prepare our private landowners for the reality of wildfire.
- ▶ Conservation districts have the relationships and expertise to address this need.



Contact:

Ron Shultz, SCC Policy Director | rshultz@scc.wa.gov | 360-407-7507
scc.wa.gov | [facebook.com/WashingtonStateConservationCommission](https://www.facebook.com/WashingtonStateConservationCommission)



Please contact our office (360-407-6200) or TTY Relay (800-833-6384) to request content in an alternate format.

SCC-FW-11-18
 Updated: November 2018

Taking action to address our state's critical resource issues



FORESTS AND WILDFIRE

Conservation districts are ideally situated to assist with forest stewardship, wildfire preparedness, and wildfire recovery on privately held forest and range lands.

- ▶ Conservation districts have established relationships and trust with local landowners that allow them to work quickly and collaboratively to address forest, range, and wildfire issues.
- ▶ Between April 2016 and June 2017, conservation districts worked with landowners to complete \$1M in Firewise™ activities and over \$4M in fire recovery work using funding from the Washington State Conservation Commission.
- ▶ Funding for this work has been sporadic and insufficient. With additional capacity conservation districts could work with landowners across the state to improve the safety, health, and resilience of forest and range lands.



The Washington State Conservation Commission (SCC) 2019-21 budget request supports this work.

SCC Decision Packages that Support Healthy Forests and Wildfire Preparedness and Recovery

Operating

CONSERVATION TECHNICAL ASSISTANCE - \$17,134,000

- ▶ Increases conservation district (CD) capacity to address critical natural resource issues — such as forest and range management and wildfire preparedness — and respond to a growing list of landowners waiting for voluntary conservation services.
- ▶ This will increase implementation of voluntary conservation projects by 30% statewide.

FOREST, RANGE HEALTH, FIRE ASSISTANCE - \$9,950,000

- ▶ Enables CDs to assist private landowners with enhancing forest and range stewardship, preparing for wildfires, and recovering natural resource and agricultural losses in areas burned by wildfire.
- ▶ The SCC will use its established and efficient granting process to administer funds to CDs in close coordination with partners, including the Department of Natural Resources.

NATURAL DISASTER RESILIENCY - \$400,000

- ▶ Trains CD staff on natural disaster recovery protocols so they're ready to support and respond to disaster survivors in all areas of the state.
- ▶ Increases SCC capacity to coordinate these local efforts with federal and state agencies in order to efficiently deliver disaster recovery funding.

Capital

MATCH FOR REGIONAL CONSERVATION PARTNERSHIP PROGRAM (RCPP) - \$11,800,000

- ▶ Provides state match required to receive over \$30 million federal dollars for seven RCPP projects in Washington, including a forest conservation partnership project in southwest Washington.
- ▶ Forest landowners will receive assistance developing and implementing forest stewardship plans that improve habitat, protect water quality, improve forest resiliency, and keep working forests working.

ENGINEERING PROJECT DESIGN AND IMPLEMENTATION - \$2,700,000

- ▶ Increases CD professional engineering capacity, resulting in an increase in constructed conservation projects per year. This includes fire recovery projects, such as stabilizing slopes in burned areas and repairing irrigation delivery systems.
- ▶ Accelerates the pace of projects that must be designed and reviewed by a licensed engineer, which will allow CDs to install fire recovery projects more quickly.



Examples of Activities Supported by SCC Budget Request



Wildfire fuels reduction, including offering wood chipper services to for landowners to remove branches and brush from their property that can add fuel to wildfires.



Identification and assessment of the number of lands, landowners, properties, and operations damaged by wildfire.



Replacement of fire-damaged fence, include for livestock owners who need to control their animals' movements.

Landowner Testimonials

"We were users/customers of the Firewise program and were impressed by the information we received and were helped greatly by the advice. We executed on it immediately, and we are strong supporters of the program. While this takes funding, we think it's highly worth it... Especially in light of the summer we went through with fires, this is a critical program. We hope you continue to support this."

- Michael Pickett and Ann Watson, Methow Valley landowners on their experience working with Okanogan Conservation District

"I was counting on my past proper forest management and labor on my property as my retirement fund. Within a couple hours, it was all lost. These projects will not only protect the soil and water, but will speed up the recovery process."

- David Price, Price Ranch operator on his experience working with Stevens County Conservation District

"I had not considered the specific dangers and what could be done to lessen them, only that I was moving to a high fire danger area. Learning that there was funding and expertise available to lessen the real dangers we face in Ferry County was a great relief not only economically, but I will sleep better with less worry."

- Landowner Wayne Christopherson on Ferry Conservation District's Firewise service